

<https://www.ohmi.co.jp/en/>

OTSUKA OHMI CERAMICS CO.,LTD.

Company Profile

Beyond the conventional boundaries of ceramics

Stunning creations made with our exclusive technology
Constantly striving for new creative value in toban ceramics

Otsuka Group Corporate Philosophy

**Otsuka - people creating new products
for better health worldwide**

In keeping with the Otsuka corporate philosophy and the principles of jissho (actualization) and sozosei (creativity), we strive to create and provide unique products and solutions of a kind that only Otsuka is capable of can do. The inspiring, innovative products of the Otsuka group contribute to the lives of people around the world

Company Philosophy of Otsuka Ohmi Ceramics Co., Ltd.

Basic Principle

Scope of Business

Bridging today and the future—
Toban's mission to pass on the finest
cultural replicas of the past and the present using
Otsuka Ohmi's exclusive expertise in the 4S technique

Seikei (Molding), Shosei (Firing), Shiage (Finishing), Sekou(Constructing)

Company Mission

Create new and broader cultural values
through the toban productions
promoting emotional
richness and artistic pleasure in our lives.

Business Motto

Don't give up, reach your goal!
Aim to complete!

Message from the President

Otsuka Ohmi Ceramics Co., Ltd. in accordance with the Otsuka group corporate philosophy, "Otsuka-people creating new products for better health worldwide", was established in 1973. We began the manufacture of toban, large-scale ceramic panels and at that time was the first ceramic company in the world to successfully develop a thin, non-warping large-scale ceramic panels sized 900 x 3,000 x 20 mm.

Exploring the vast potential of toban, we moved from OT ceramics to the manufacture of terracotta-like materials, developing techniques that produce a wide array of styles and methods for rendering extremely accurate and credible reproductions. The support we have received from those involved in design and architecture, along with creators, artists, and those who appreciate ceramics have been invaluable to our accomplishments in this area.

We are dedicated to advancing the toban technology and will continue to develop new products that meet today's needs. Our goal is to create products that embody the Otsuka sensibility and bring to life the special properties of ceramics. These properties can not only be incorporated in architectural spaces, but also used to create comfortable living spaces and document through reproduction cultural treasures for future generations. Each of us at Otsuka Ohmi Ceramics extends our sincere gratitude and appreciation for your past and continued support and patronage."



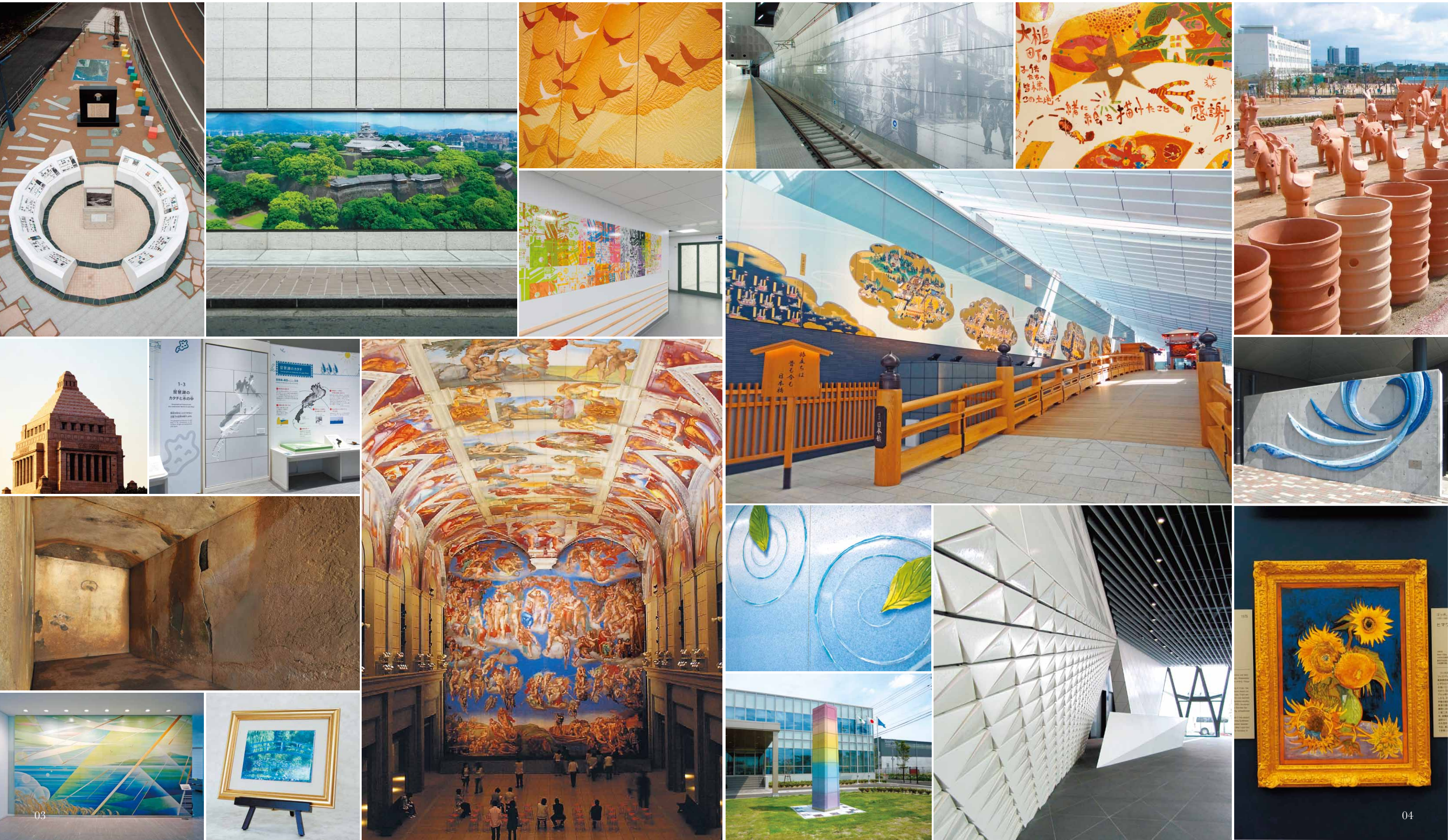
Eitsugu Osugi

President,
Otsuka Ohmi Ceramics Co., Ltd.

Toban Ceramics Created by Otsuka Ohmi Ceramics

An ingenious toban ceramic artwork comes to life with its advanced ceramic technology.

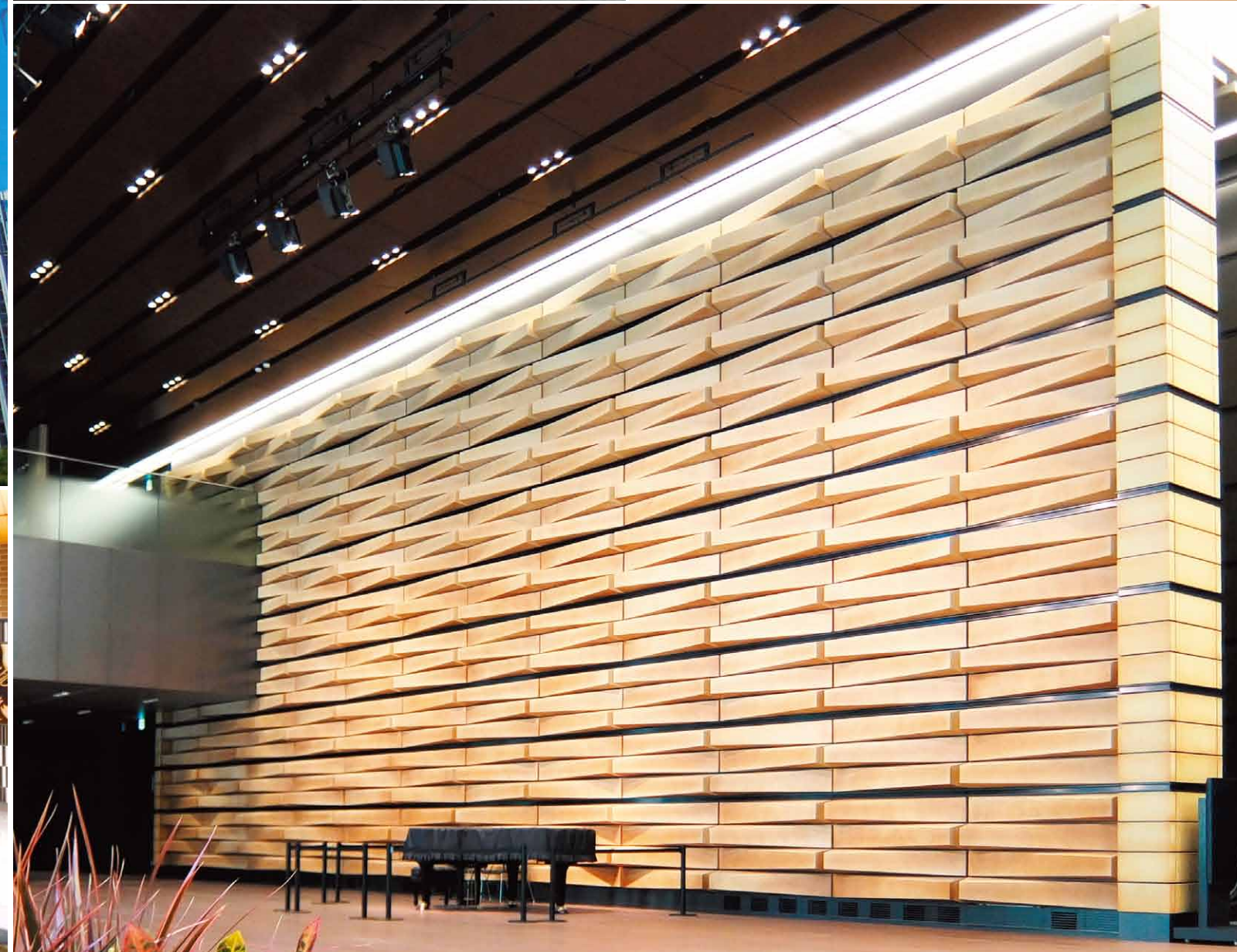
Toban ceramics are created for a variety of venues and purposes such as decorative ceramic wall murals, commemorative monuments, and reproductions of art masterpieces which may also preserve national cultural assets. The rich expressiveness and excellent durability will forever vividly communicate the emotions embodied in the finished work.





Superior Expressiveness and Durability

Toban ceramics can be installed in locations where water flows as well as in any outdoor location. In addition to the unique, creative ceramic designs, the original works entertain in any given environment.



A Main Feature in Delineated Spaces

The dynamism of spaces created using ceramic artwork proves the technological expertise held by Otsuka Ohmi Ceramics. Viewers' hearts are captured by the overwhelming impressions.

Ceramics Business Areas

1 Original Creation

Original "toban" ceramic panel artworks to commemorate school and corporate anniversaries or to set as an art piece in entrance halls add glamour to the atmosphere. The rustic warmth and the textural expression that emerges naturally from the ceramic artwork enlivens a space and quickens one's heart. In addition, with a wide range of ceramic size, color expression, as well as preservability of any artwork, artists around the world appreciate the versatility of toban ceramics.



2 Reproduction of Art Masterpieces

One area of Ohmi's expertise is an ability to faithfully reproduce artwork such as the reproductions of masterpieces exhibited at the Otsuka Museum of Art. Any original painting, precious stored antique paintings, or writings can be replicated on a "toban" ceramic panel to preserve the memory eternally. A ceramic reproduction can be viewed by large audiences, and even touched directly, which opens up new ways for art masterpieces to be appreciated.



Ohmi Ceramics explores and proposes ways to use ceramics optimally in delineated spaces. Through comprehensive consultations with clients from the concept stage to the design and construction methods, we can create and install richly sensory, one-of-a-kind toban ceramic design work.

3 Restoration of Cultural Assets

Outstanding weatherability and durability, including resistance to discoloration and quality deterioration, are features of toban ceramics. Toban ceramic panels are used to reproduce cultural assets as well as in the restoration of buildings designated as an important cultural property. This "touch exhibition" is gaining rave reviews as a new exhibition approach to bring people close to such historical replications.



4 Outdoor Signage

Toban ceramics have outstanding durability against deterioration from environmental causes, therefore, they are ideal for outdoor signs. Even when exposed to sunlight, wind and rain, text and visual features such as maps created on toban ceramics will not fade. Toban-ceramic road signs, outdoor monuments and an infinite variety of other outdoor uses are possible.



5 Exterior Wall Design

Toban ceramic is appreciated as a functional construction material due to its high durability in any climactic conditions. Utilized as a building material for exterior design such as in stations and on building walls, there are many useful application in and around urban areas. For example, the rooftop of the central tower of the National Diet Building in Tokyo and the decorative walls of the Nakanoshima Festival Tower in Osaka are created by toban.



Company Information

Otsuka Ohmi Ceramics Co., Ltd.

Head Office	3-2-21 Otedori, Chuo-ku, Osaka-shi, Osaka, 540-0021 Japan
Establishment	July, 1973
Capital	¥100 million
Chairman	Kyoichi Komatsu
President	Eitsugu Osugi
Business Description	planning, design, production and construction of large-scale ceramic panels, ceramic panel masterpiece art, ceramic walls, reliefs, terracotta, OT ceramics, ceramic portraits and ceramic signage panels

Offices / Showroom

Head office	3-2-21 Otedori, Chuo-ku, Osaka, Osaka-Pref., 540-0021
West Japan Branch	Tel : +81-6-6943-6695
East Japan Branch	Daini-Kanda Bldg.2-2 Kanda-tsukasamachi, Chiyoda-ku, Tokyo, 101-0048 Tel: +81-3-5295-3555
Shigaraki Factory	926 Hosohara, Shigaraki-cho, Koka-shi, Shiga-ken, 529-1836 Tel: +81-748-82-3001
Shigaraki Showroom	The showroom displays variety of original ceramic artworks, jointly created art productions with renowned artists, as well as creatively reproduced important cultural assets. Please call +81-748-82-3001 or inquire through our website (https://www.ohmi.co.jp/en/contact/) to make an appointment.

► Visit our website for more information. <https://www.ohmi.co.jp/en/>

Otsuka group companies

Otsuka Holdings, Otsuka Pharmaceutical, Otsuka Pharmaceutical Factory, Taiho Pharmaceutical, Otsuka Warehouse, Otsuka Chemical, Otsuka Medical Devices, Otsuka Foods, Earth Chemical, Earth Environmental Service, Earth Pet, JIMRO, Otsuka Electronics, Otsuka Packaging Industries, Otsuka Techno, Otsuka Chilled Foods,Okayama Taiho Pharmaceutical, EN Otsuka Pharmaceutical, J.O. Pharma

Company Milestones

1973	<ul style="list-style-type: none">Established Otsuka Ohmi Ceramics Co., Ltd.Awarded the large ceramic board production technology from Kazuchika Okura Memorial Foundation Prize
1980	<ul style="list-style-type: none">Shigaraki Factory (1st factory) opened
1982	<ul style="list-style-type: none">Robert Rauschenberg project, in which his works were displayed on ceramic materials in Shigaraki, Japan, 1982
1985	<ul style="list-style-type: none">2nd factory opened for production of architectural material, OT ceramics
1989	<ul style="list-style-type: none">Renovation of the Japanese Diet Building's central tower with Ohmi terracottaAwarded the Corporate Inter-design Prize from the Japan Inter-design Forum
1990	<ul style="list-style-type: none">Outdoor exhibition of the ceramic reproduction of, "The Last Judgement", and other art masterpieces at the Osaka Int'l Garden & Greenery Expo
1991	<ul style="list-style-type: none">3rd factory opened for full-scale production of terracotta materials
1992	<ul style="list-style-type: none">Ceramic artwork installation on walls of the departure lobby of Narita International Airport titled, "Sun, Moon and Four Seasons"
1993	<ul style="list-style-type: none">Ceramic rennovation of partially peeled-off section of the cave 323, High Tang, Mogao Cave,Dunhuang, ChinaThe Kansai Art Grand Prize from the Osaka Shimbun newspaperAwarded the 3rd Architectural Association of Japan AwardAwarded the 6th NBK Grand Prize from the New Business Conference Kansai
1995	<ul style="list-style-type: none">Awarded the 29th SDA Special Award & the President Award of the Japan Institute of Design Promotion for the contribution to expand sign expressions with the development in ceramic board application
1997	<ul style="list-style-type: none">Start of manufacturing and sales of the top board of draft chambers (chemical experiment tables)
1998	<ul style="list-style-type: none">Opening of Otsuka Museum of Art
2001	<ul style="list-style-type: none">Installation of ceramic reproduction of selected art masterpieces at Garden Museum Hiei
2002	<ul style="list-style-type: none">Reproduction artwork of a tea-leaf jar with a wisteria design, a National Treasure made by Nonomura Ninsei, held in the collection of the MOA Museum in Atami, Japan
2003	<ul style="list-style-type: none">Ceramic reproduction of a mural painting, "Pranidhi Scene 20 from the Bezeklik Thousand Buddha Cave" located in Turfan, China , collected by Ryukoku University's Omiya LibraryAwarded the Special Prize of the Japan Association of Artists, Craftsmen and Architects
2007	<ul style="list-style-type: none">A full-scale ceramic reproduction of the Sistine Chapel ceiling completed in the Sistine Hall of Otsuka Museum of Art in commemoration of the 10th anniversary of the museum
2008	<ul style="list-style-type: none">Ceramic reproduction of murals from the Takamatsuzuka Tomb created for installation in the Senriyama Campus of Kansai University
2010	<ul style="list-style-type: none">Ceramic reproduction of murals from the Kitora Tomb Stone Chamber created under commission for Agency for Cultural Affairs, Government of Japan
2012	<ul style="list-style-type: none">Created Ceramic reliefs, "Fauns Enjoying Music for installation at Nakanoshima Festival Tower
2014	<ul style="list-style-type: none">Ceramic reproduction of the seated statue of Great Priest Kobo, held in the collection of Kongobuji Temple, Mount Koya, Japan, created utilizing 3-D digital technologyCeramic reproduction of paintings from folding screens, Edo-zu Byobu (Edo period folding screens), installed in the commercial area in the international terminal building of Haneda International AirportCreated toban masterpiece of Van Gogh's "Sunflowers", known publicly as the Sunflowers of Ashiya in Japan for exhibition at Otsuka Museum of Art
2015	<ul style="list-style-type: none">Terracotta artwall installed in the east wing of Sumitomo Mitsui Banking Corporation East Tower
2016	<ul style="list-style-type: none">Installation of reproduction Kitora tomb stone chamber mural walls inside the "Four Gods Museum" at the experiential Kitora Tomb Stone Chamber
2017	<ul style="list-style-type: none">Special exhibition, "World of Toban", to commemorate the company's 45th anniversary
2018	<ul style="list-style-type: none">The Prime Minister's Award in the Seventh Monodzukuri Nippon Grand AwardCeramic reproduction of the flame pot, a National Treasure (Registration No.1), in Tokamachi City, Niigata Prefecture
2019	<ul style="list-style-type: none">Exhibition at the booth of Otsuka Museum of Art in the 25th ICOM General Conference in Kyoto (ICOM Kyoto 2019)
2020	<ul style="list-style-type: none">Ceramic reproduction of mural No.1 (damaged in the fire) of Main Hall (Kondo) of Horyuji Temple in Nara Prefecture